



# 2025 Impact Report



Climate  
Stewards



## Welcome to our 2025 Impact Report

2025 started with President Trump announcing his intention to pull out of the Paris Climate Agreement. In the ensuing months, wildfires raged, glaciers melted, and we in the UK had our hottest and sunniest year on record.

Verse 2 of the hymn, “Joy to the World”, often sung at Christmas, starts “Joy to the earth ...”, reminding us that the gospel should be good news for all of creation, not just us humans! None of us will solve all the world’s climate challenges alone, but we can bring joy to the earth - and some of our poorest global neighbours - through our actions. And together, these will have an impact.

2025 was a busy year for Climate Stewards. We worked hard to develop our digital carbon footprint calculators, strengthened our audit procedures and adapted our language to meet international carbon legislation. Meanwhile, we used your climate contributions to fund our partner projects to remove or avoid 11,595 tonnes of CO<sub>2</sub>e emissions, while bringing multiple benefits to people and places.

Thank you for your support and interest in our work!

Caroline Pomeroy

**DIRECTOR**

Climate Stewards provides consultancy advice and online tools to help individuals and organisations calculate and cut their carbon footprint.

Thanks to your support, we fund community-based carbon projects in Kenya, Ghana, Tanzania, Uganda and Nepal.

You can find out more on our [website](#), by [subscribing to our newsletter](#) or [following us on social media](#).

## From the Board

2025 was an interesting year for Climate Stewards, as we navigated new international rules around carbon offsetting, changing attitudes to climate change and increased scepticism among some about perceived “greenwashing”.

Despite this, Climate Stewards continues to thrive, with robust income and a significant increase in the number of users of our digital carbon footprint calculators and other resources.

I am grateful to all those who supported our work last year, enabling us to continue supporting community-based carbon projects in the Global South. In our project areas, which are highly vulnerable to climate change, Climate Stewards is bringing fresh hope to people and places.

Gareth Martin

**CHAIR,  
BOARD OF TRUSTEES**



# New words, same impact

In this report, you will notice references to carbon offsetting as well as the new term ‘climate contribution’.

As we entered 2025, we knew that Climate Stewards needed to respond to new carbon market regulations coming into force due to the implementation of Article 6 of the Paris Agreement.

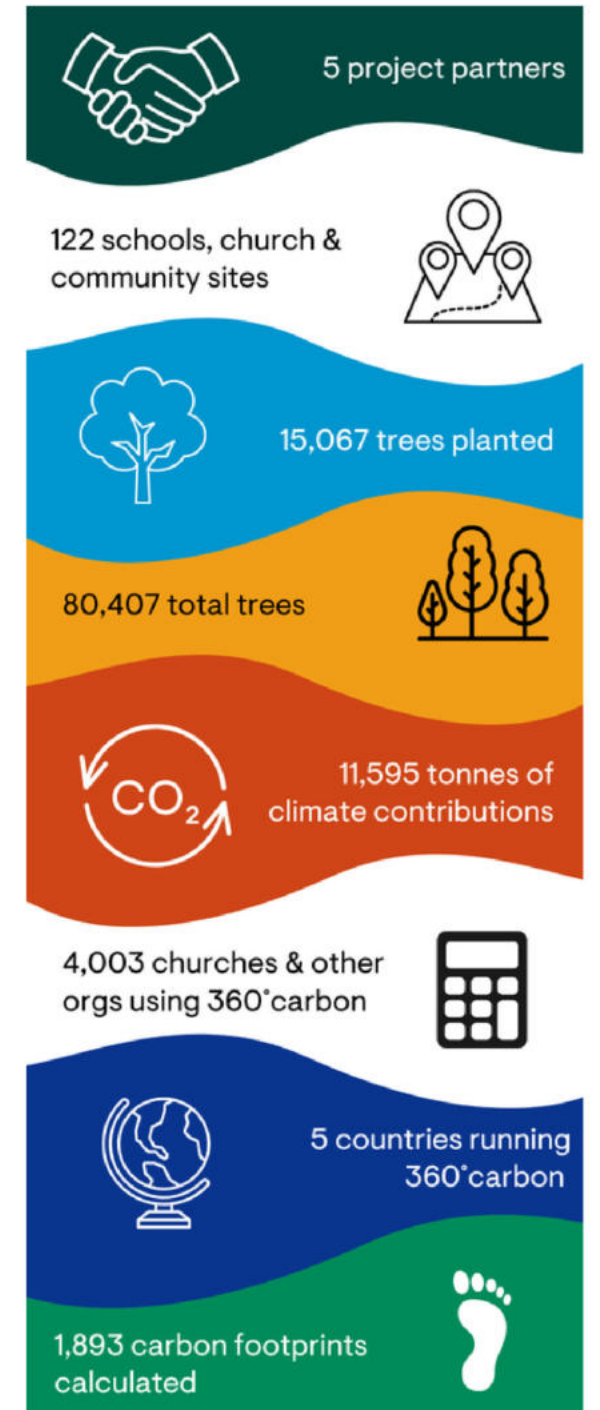
So, at the beginning of 2025, we set up a working group of trustees and staff to address this challenge. Throughout the year, we carried out research, took advice from a carbon market consultant, and had numerous meetings and calls with existing offsetters and other stakeholders.

By late 2025, we had worked out how to navigate the situation and adapt our business model so that we could continue to support our ethical, transparent and robust projects bringing multiple benefits to local communities alongside carbon mitigation. We decided to move to a climate contribution model, ready to communicate this to our stakeholders in early 2026.



Instead of being asked to measure, reduce and offset their carbon footprint, organisations and individuals are now invited to calculate, cut and contribute. In line with this, Climate Stewards no longer sells carbon offsets from our community projects – instead, we invite voluntary contributions towards climate action. Our commitment to high-quality, community-based projects remains unchanged.

A climate contribution model means that donors continue to calculate their carbon footprint and then make a contribution equivalent to their emissions. The amount paid is treated as a contribution towards climate action for the good of the planet; global carbon emissions are reduced, and benefits are felt in the countries where our partners work. Unlike a carbon offset, donors will not be able to state that their own carbon footprint has been reduced, make a claim of carbon neutrality or ‘Net Zero’. You can read more about climate contributions [here](#).



# Talking carbon

2025 saw the Climate Stewards team out and about, taking every opportunity to hear from existing supporters and donors, and to meet potential new ones.

In March, Caroline and Adrian were invited to the Church of England's National Net Zero Carbon Officers' conference. This was a great opportunity to strengthen our relationship with Dioceses and ensure our online tools and advice are tailored for this audience. Touching and hearing a 1.5 million-year old ice core as it snapped, crackled and popped at the British Antarctic Survey was an added bonus!



Along with face-to-face events, Climate Stewards reached new audiences digitally through webinars and podcasts throughout the year.

During Lent 2025, over 1,700 people and churches signed up for our annual Carbon Fast – our biggest yet. Each week, participants were invited to reduce their carbon footprint in a different area of life, from travel and energy to food and shopping. It was encouraging to receive feedback from people who had taken action as a result of the Fast.

*As a result of your carbon fasts, after fifty years, I moved my bank account to a more ethical one. Thanks for making me take action! Richard Kerr-Wilson*

*As someone who doesn't have a car, I think what has helped me with sticking to my bike/walking/public transport even on rainy days or with long waits at bus stops has been framing the decision as choosing something more joyful, pleasurable and involved with my community. Shanti Mathias*

In the summer, we were at New Wine again (a big Christian conference with over 10,000 attendees) where we co-hosted The Creation Care Hub with A Rocha UK, Green Christian and Operation Noah, and provided a dedicated space in the 'Awaken' prayer tent.



During the six days we had many rich conversations with delegates, church leaders and representatives of mission agencies. Over 500 people engaged with our 'Question of the Day', and it was a great opportunity to share our resources with many who wanted to connect their faith with their care for the environment and help their churches do the same.

## Hope for people and places

In 2025 we continued to support partner projects using our Seal of Approval (SoA) framework, which is based on our 18 years of experience supporting carbon projects in eight countries. The Seal of Approval process involves an assessment of land ownership, soil type and climate, together with risk analysis looking at risks such as fire, drought, theft, disease, political and social risks. Our forestry carbon estimates are counted “ex ante” (in advance) and we hold back a buffer stock of carbon which will not be counted or sold until the end of the project life (usually 15 years).

In 2025 Climate Stewards funded the construction of 200 smokeless metal stoves in Nepal which will deliver 13,343 tonnes of carbon saved through their use between 2026-2036.

We also funded our partners in Ghana and Kenya to plant an additional 15,067 trees (made up of 15 different species, mostly indigenous) in three new phases of community forestry. These will sequester an estimated 13,835 tonnes of carbon dioxide over a 15-year project life. When added to our existing sites in Tanzania, by the end of 2025 Climate Stewards was supporting our partners to care for over 80,000 trees on 122 sites.

Most trees are permanent; the rest will be used for sustainably harvested timber (for construction, electricity poles, furniture etc). Many trees are planted on church and school land, with some on unproductive or marginal land worked by smallholder farmers and communities.

Most planting schemes also include fruit trees which improve family nutrition and provide new sources of income, ensuring that climate action benefits the communities at the heart of our work.

## Spotlight on: WEC - Kenya

Watersheds Ecosystem Conservation (WEC) works with churches and schools in Kitui District, south-eastern Kenya, to grow a mix of tree species on each site. Between 2019 and 2024 we funded over 15,000 trees on 48 sites; in 2025 we funded WEC to plant nearly 5,000 more trees on a further 15 sites including twelve schools and three churches. Jacob Mwanduka, WEC’s manager, writes:

*For each project we have undertaken, we have impacted positively adults, children and those neighbouring the projects. In each church project we have reached 70 to 100 people, and in schools between 250 to 500 pupils. Members of public who know about our work purchase seedlings from our nursery and attend public meetings where our work is discussed at length. Each year over 60 people visit the WEC tree nursery to purchase seedlings or learn about tree growing. When headteachers and pastors go to new jobs, they always take the tree growing ‘gospel’ to their new posts, hence furthering conservation messages and acquiring and planting tree seedlings.*



## Working with Compassion

Compassion International is an international Christian child development organisation based in the USA, and works in 29 countries including Togo. In September, Climate Stewards signed a Strategic Cooperation Agreement with Compassion International – Togo (CITG).

This agreement allows Climate Stewards and CITG to work together to design and implement a pilot tree-growing project with church communities in Togo, and to investigate the potential for scaling up these initiatives with funding through the sale of verified carbon credits. This is the first step towards designing and implementing a project which will involve Compassion's local church partners in growing and caring for trees on land owned by churches and smallholder farmers, bringing fresh sources of income and nutrition alongside local environmental benefits such as reduced erosion, increased soil health, and shade.

Compassion Togo's Eugene Amana told us;

*For CITG, this partnership is a great opportunity to accelerate the implementation of part of our roadmap for creation care. It expands our contribution to environmental stewardship and community resilience across Togo.*



## Investment for the future in Ghana

During 2025 we supported A Rocha Ghana to plant another 10,200 trees on nine smallholder farms on the steep slopes surrounding Lake Bosomtwe in central Ghana. These native trees will sequester 7,240 tonnes of carbon (plus 3,505 buffer stocks) over the 15-year project life.

We also funded school environment clubs at four schools in the same area. These clubs, led by an enthusiastic team of volunteers from the local university, included a very popular interactive Climate Parliament activity, helping students to understand the causes and effects of climate change, and ways to tackle it. At the same time, their teachers were trained in how to incorporate climate change into their lessons, so that the messages are reinforced at every opportunity.



The A Rocha team supported schools to plant small orchards of fruiting trees, with students learning practical skills including tree identification, preparing the site for planting, pest control, watering and weeding. They have been encouraged by the way information is spreading to the wider community, as the students are taking their new-found knowledge home to their families.

Students also enjoyed nature walks, aimed at helping them appreciate and understand the natural world. Here are some of their comments:

*"Did you catch the bird singing? It is so beautiful."*

*"It feels so cool and cozy to be under this tree's shadow."*

*"We should pick up the litter and keep the area clean; there is a lot of it here."*

*"I saw some trees being chopped down. The environment will not benefit from that."*

*"Perhaps planting more trees will help address the issue of deforestation."*

*"I'll let my parents know about tree-planting campaigns."*

# Clean cookstoves cutting carbon

## Spotlight on: RIDS Nepal

Our partner, RIDS-Nepal, works in remote, mountainous communities in north-western Nepal. Climate Stewards funds smokeless metal stoves which are installed alongside a life-changing group of appropriate technologies – latrines, LED lights (using either solar PV or Pico-Hydro) and clean water.

Based on data from baseline and monitoring surveys, we know that switching to a smokeless metal stove will see a family using an average of 59% less firewood, with each stove saving 6.5 tonnes of carbon emissions (tCO<sub>2</sub>) per year over a project lifespan of 10 years. Reducing the need for firewood helps to protect local forests and ecosystems and provides significant health benefits, in addition to cutting carbon emissions.

In 2025, 200 stoves financed by Climate Stewards were installed in the village of Luma. The stoves, each weighing 55kg, were manufactured in Nepalgunj on the Indian border, transported by truck to the field office in Luma, and then carried home by the villagers. RIDS-Nepal installed the stoves and trained each family on their proper use.

Reports from Luma show that the stoves are already changing the lives of villagers for the better. Breathing difficulties and painful eye conditions are healing, and sleep is improved; homes are safer now that they do not contain open fires; and cooking is quicker and more controlled, making food more nutritious.



# Seal of Approval licensing

The Seal of Approval provides a framework which can be used by other organisations to develop and manage carbon projects funded by their own or their supporters' climate contributions.

In 2025, we:

- re-issued a Seal of Approval licence to Eco Brixs, a community plastic recycling organisation in southern Uganda. This confirmed that over 3,000 tonnes of carbon emissions had been saved through the conversion of over 1,200 tonnes of waste plastic into plastic flakes for manufacturing, protecting the environment while creating jobs for local people.
- advised and supported Inter-Christian Fellowships' Evangelical Missions (IcFEM), a community health outreach programme in northern Kenya, as they monitored over 8,000 trees being grown under Seal of Approval licence by smallholder farmers around Kimilili.
- monitored Seal of Approval licensed projects run by BMS World Mission partners in Chad (carbon avoidance from solar panels on two remote hospitals) and Uganda (agroforestry near Gulu).
- awarded a Seal of Approval license to a new BMS solar project in Bangladesh that will come online in 2026.
- worked with the Anglican Alliance, Communion Forest and Anglican Development Services Kenya to monitor a church-based tree growing project for the Partners in Carbon Sequestration (PICS) initiative. 700 trees of seven species had been planted at a church and training college in Makueni County, Kenya in 2024.



# Finishing well in Uganda

Climate Stewards worked with A Rocha Uganda to provide bio-sand water filters between 2017 and 2025, funding 735 filters. With each generating enough clean water for a whole household, and often neighbours too, many thousands of people have seen improvements to health, and savings in money and time. The filters also saved an estimated 3,000 tonnes of carbon.



The filters were located in a poor, suburban area around Kiteezi on the northern fringe of Kampala, a rapidly expanding city and home to over 4 million people. As the city has grown, land has become more valuable, and communities have become increasingly transitory, with families shifting frequently to find work and some being evicted from rented properties. As a result, monitoring showed that filters were being abandoned as people moved away.

Despite initiatives to refurbish and relocate filters and re-train people, the transitory nature of this area means that it was not viable to continue to fund new filters. Around half of the original filters are working well and we are confident that they will continue to be used for years to come.

We are grateful to the team at A Rocha Uganda for their hard work, care and professionalism in managing this project over the last eight years.

# Counting Carbon

## Helping churches cut carbon

360°carbon is our carbon calculator tool designed specifically for churches and small charities. By the end of 2025 there were 5,236 people registered to use 360°carbon, representing nearly 4,000 organisations. We provided support for users through a series of webinars, including for Methodist circuits, the Diocese in Europe and other Christian organisations.

Through our partnership with A Rocha Portugal, we launched 360°carbon in Portuguese, which brought the number of localised versions available to five along with the UK, USA, Netherlands and New Zealand. Each version uses the appropriate emissions factors for different activities, measurement units, and language, and 360°carbon has users in many more countries across the globe.

Throughout 2025, we worked with the Anglican Diocese in Europe to create a tailored version of 360°carbon for use by 140 chaplaincies in over 30 European countries.

## Counting carbon for larger organisations

For many organisations, commissioning a carbon footprint audit is the first step towards understanding how their own activities contribute to climate change. Many then take steps to reduce their emissions where possible. During 2025, we carried out audits for Bible Society, Church Mission Society, Friends International, Langham Partnership, Mission to Seafarers, and Wycliffe Bible Translators. We also provided analysis of travel data for other organisations to enable them to contribute to climate solutions by funding our projects.

*Our review with Climate Stewards was a well thought through, well communicated and well executed plan to see what our impact is as an organisation and with suggestions of what responses we could make. It was needing some detailed work to get the data together, which gave us confidence that the results rested on a fair picture of our reality. Thank-you Climate Stewards!*

**Alan Tower, National Director, Friends International**



Several years ago, a small group of volunteers within our office got together to work out how we could do creation care better. As a global mission, our work often involves travel and so we decided to make climate contributions that can compensate for this travel, allowing us to engage with our work in the Global South whilst also caring for creation.

The team at Climate Stewards have made that process as easy as possible, taking the information we send them and converting it into invoices each quarter. They have also taken the time to meet with our team and explain what they do, allowing us to connect with this part of our faith. They are experts in their work; there is no one better placed to help you understand the complex world of climate contributions within the context of God's call to care for creation.

**Tim Burton, Global Communications Lead,  
The Leprosy Mission International**



We are delighted to be partnering with Climate Stewards to help us offset our carbon footprint. Not only do we have our Christian ethos in common, we have the confidence of knowing we join many other Christian organisations who have already made great progress with Climate Stewards in this important area. We particularly like the projects they invest in because their focus is on creating positive impact for both our planet and the people most impacted by environmental harm.

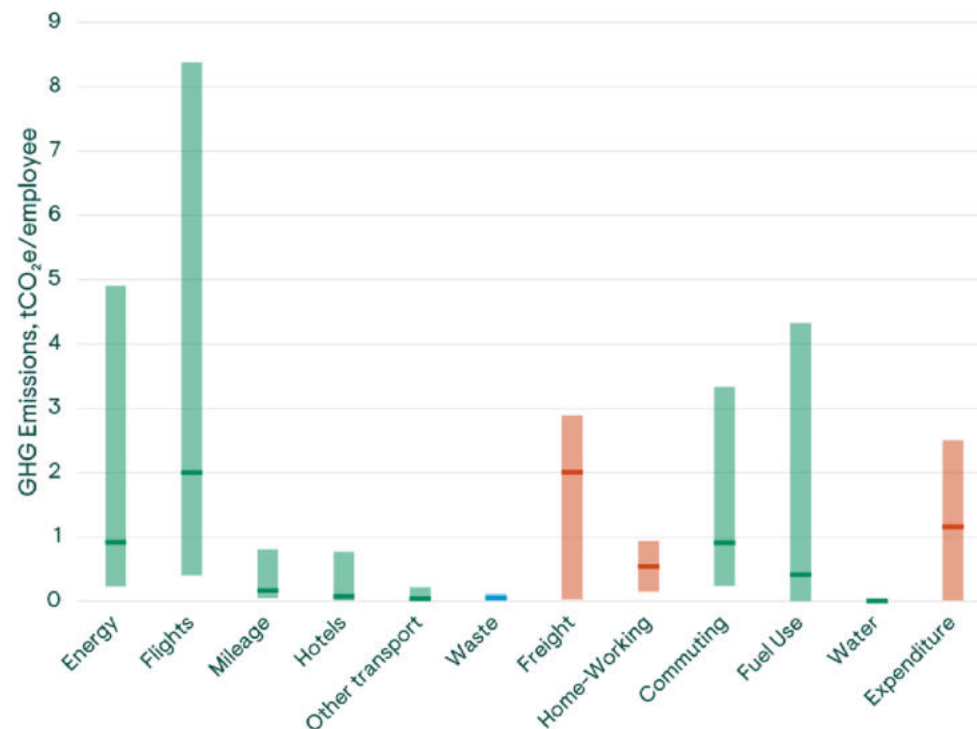
**Felicity Griffiths, CFO and COO, Stewardship**



## Comparing carbon footprints

Many of our audit clients are keen to know how their carbon footprint compares with that of other organisations. This can be a tricky question to answer, since the organisations we work with are so varied in where and how they operate – from small UK-based charities to a whole Diocese, mission agency or charity.

In a joint project with our sister organisation, Climate Stewards Netherlands, we developed a benchmark based on performance indicators: for example, emissions from flights per employee. The benchmark includes the typical range and median average results for each emissions category, and our client's footprints can be added to it to see where they fit. The benchmark is already proving a hit and has generated lots of discussion with clients in the UK and the Netherlands.



Shaded area shows expected range for each category, excluding very low or very high values (10th to 90th percentile range). Coloured bar shows median average for each category. Colours denote:  
 ■ High confidence, more than 50% of emissions for category were calculated using emissions factors;  
 ■ Low confidence, more than 50% of emissions for category were calculated using cost-based proxies, or fewer than 10 data points available for category;  
 ■ Medium confidence, criteria for High or Low confidence were not met.

# A growing board

After a campaign to grow and diversify our board of trustees, we were delighted to welcome three new board members:

**Hannah Mann** (below left) is currently the Environment Programme Manager for the Diocese of Oxford, supporting parishes engaged in climate action and responsible for the diocesan Net Zero carbon target.

**Sarah French** (below right) is an independent Consultant and Senior Advisor specialising in biodiversity conservation, policy, climate change, environmental education, and sustainable development. She has served as a trustee and senior staff member of A Rocha International, currently sits on the board of A Rocha Suisse and is an active member of several IUCN Commissions.



**Rhoda Rubaiza** (below left) has a background in international development. She currently works as a Project Lead at ZEP-RE PTA Reinsurance Company in Nairobi, Kenya. Previously, she worked with the World Bank and the World Food Programme.

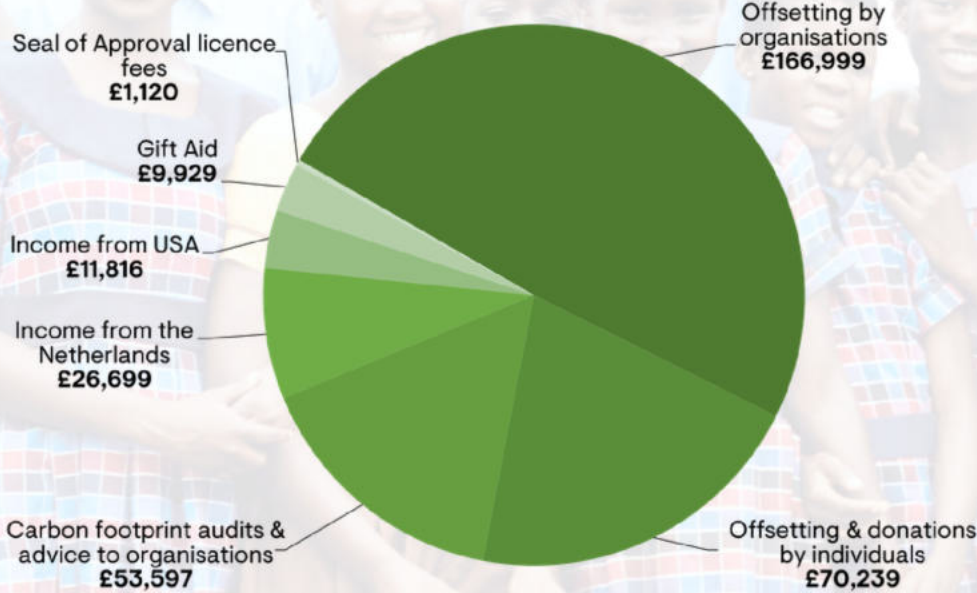
In October we said goodbye to retiring board member **David Hughes** (below right, with Caroline). David was involved in setting up Climate Stewards in 2010, and has served on our board since 2012, including eight years as chair. We are enormously thankful for his leadership, insight, wisdom and sense of humour.



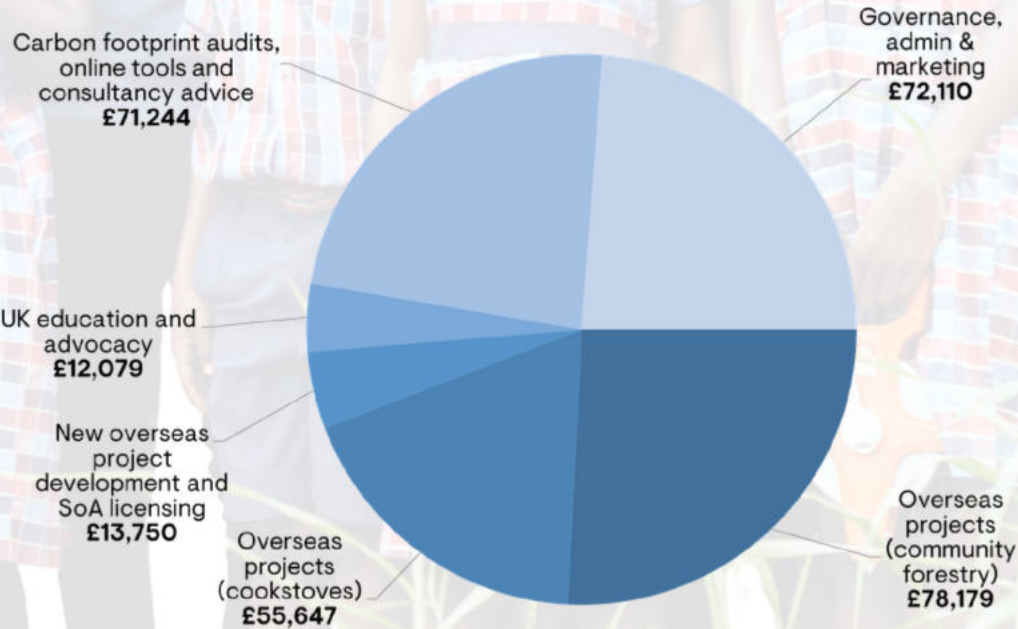
# Finances

Our provisional accounts show that income in 2025 was £339,309, 6% lower than 2024. This reflects both the broader pressures facing the charity sector and a period of deliberate transition for Climate Stewards as we adapted our model in response to evolving carbon market legislation. Our commitment to high-quality, community-based projects is unchanged, and we remain confident in the foundations we are building for the future. For full details of our finances, see our Statutory Accounts on the Charity Commission website.

## Total Income £339,309



## Total Expenditure £303,009



# Contact Climate Stewards:

 [info@climatestewards.org](mailto:info@climatestewards.org)

Rockfield House  
Nunney  
FROME  
BA11 4NP  
UK

Registered charity #1141108



Climate Stewards is part of the

**A ROCHA**

worldwide family